

BIS RapidRail® Slide Nuts

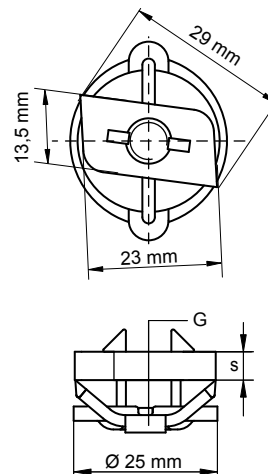
fixing to BIS RapidRail®



Features and Benefits

- slide nut with washer and BIS RapidRail® spring
- suitable for WM0, 1, 15, 2, 30, 35
- ready-to-use pre-assembled for a quick fixing, and retains assembly in place before final tightening
- material: metal parts made of steel 1.0332; spring(s) made of POM (polyoxymethylene), green
- zinc plated

Part No.	G	For Rail	s (mm)	Fa,z (N)	Pack 1	Pack 2
651 3 106	M6	WM0 - 35	4,0	2.000	50	500
651 3 108	M8	WM0 - 35	5,0	2.700	50	500
651 3 110	M10	WM0 - 35	5,0	2.900	50	500



Alternative

BIS RapidRail® Hammerfix 198

Complementary

BIS RapidRail® Fixing Rail 179

BIS RapidRail® Cantilever Arms 183

BIS RapidRail® Hammerfix

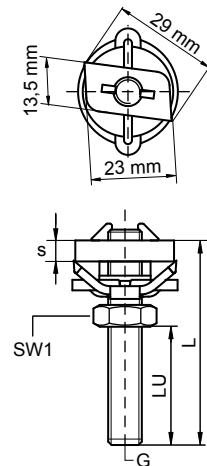
fixing to BIS RapidRail®



Features and Benefits

- slide nut with stud bolt, washer and BIS RapidRail® spring
- suitable for WM0, 1, 15, 2, 30, 35
- ready-to-use pre-assembled for a quick fixing, and retains assembly in place before final tightening
- material: metal parts made of steel 1.0332; spring(s) made of POM (polyoxymethylene), green
- zinc plated

Part No.	G	L	LU (mm)	For Rail	s (mm)	SW1 (mm)	Fa,z (N)	Pack 1	Pack 2
652 3 602	M6	20 mm	5	WM0 - 35	4,0	10	2.000	25	250
652 3 603	M6	30 mm	15	WM0 - 35	4,0	10	2.000	25	250
652 3 604	M6	40 mm	25	WM0 - 35	4,0	10	2.000	25	250
652 3 610	M6	100 mm	85	WM0 - 35	4,0	10	2.000	25	250
652 3 802	M8	25 mm	7	WM0 - 35	5,0	13	2.700	25	250
652 3 803	M8	30 mm	12	WM0 - 35	5,0	13	2.700	25	250
652 3 804	M8	40 mm	22	WM0 - 35	5,0	13	2.700	25	250
652 3 805	M8	50 mm	32	WM0 - 35	5,0	13	2.700	25	250
652 3 806	M8	60 mm	42	WM0 - 35	5,0	13	2.700	25	250
652 3 807	M8	70 mm	52	WM0 - 35	5,0	13	2.700	25	250
652 3 808	M8	80 mm	62	WM0 - 35	5,0	13	2.700	25	250
652 3 809	M8	90 mm	72	WM0 - 35	5,0	13	2.700	25	250
652 3 810	M8	100 mm	82	WM0 - 35	5,0	13	2.700	25	250
652 3 812	M8	120 mm	102	WM0 - 35	5,0	13	2.700	25	250
652 3 815	M8	150 mm	132	WM0 - 35	5,0	13	2.700	25	250
652 3 816	M8	160 mm	142	WM0 - 35	5,0	13	2.700	25	250
652 3 818	M8	180 mm	162	WM0 - 35	5,0	13	2.700	25	125
652 3 820	M8	200 mm	182	WM0 - 35	5,0	13	2.700	25	125
652 3 002	M10	25 mm	7	WM0 - 35	5,0	17	2.900	25	250
652 3 003	M10	30 mm	12	WM0 - 35	5,0	17	2.900	25	250
652 3 004	M10	40 mm	22	WM0 - 35	5,0	17	2.900	25	250
652 3 005	M10	50 mm	32	WM0 - 35	5,0	17	2.900	25	250
652 3 006	M10	60 mm	42	WM0 - 35	5,0	17	2.900	25	250
652 3 007	M10	70 mm	52	WM0 - 35	5,0	17	2.900	25	250
652 3 008	M10	80 mm	62	WM0 - 35	5,0	17	2.900	25	250
652 3 009	M10	90 mm	72	WM0 - 35	5,0	17	2.900	25	250
652 3 010	M10	100 mm	82	WM0 - 35	5,0	17	2.900	25	250
652 3 016	M10	160 mm	142	WM0 - 35	5,0	17	2.900	25	125
652 3 018	M10	180 mm	162	WM0 - 35	5,0	17	2.900	25	125



Complementary

BIS RapidRail® Fixing Rail	179
BIS RapidRail® Cantilever Arms	183