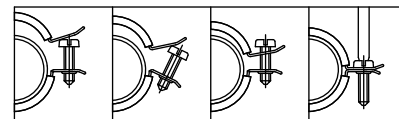


# BISMAT<sup>®</sup> 2000

for metal pipes Ø 57 - 219 mm

M8/10  
M10



## Features and Benefits

- two-screw clamp
- with BISMAT<sup>®</sup> quick locking system
- from Part No. 342 3 168: with quick locking system
- material: steel
- zinc plated
- noise insulating lining, EPDM rubber, black
- lining resistant to ageing
- noise insulation tested according to DIN 4109
- tested for fire safety

Part No.	D (mm)	D (")	DN (mm)	G	B (mm)	H (mm)	h (mm)	b x s (mm)	Fa,z (N)	RAL	Pack 1
340 3 064	57 - 64	2	50	M8/10	107	90	52	23 x 2,0	520	RAL <sup>2</sup>	50
340 3 070	64 - 70	-	-	M8/10	115	99	56	23 x 2,0	520	RAL <sup>2</sup>	50
340 3 080	73 - 80	2½	65	M8/10	126	109	61	23 x 2,0	520	RAL <sup>2</sup>	50
340 3 091	83 - 91	3	80	M8/10	137	121	67	25 x 2,5	935	RAL <sup>2</sup>	25
340 3 105	100 - 105	-	-	M8/10	152	135	74	25 x 2,5	935	RAL <sup>2</sup>	25
340 3 114	108 - 114	4	100	M8/10	160	144	79	25 x 2,5	935	RAL <sup>2</sup>	25
340 3 119	116 - 119	-	-	M8/10	165	149	81	25 x 2,5	935	RAL <sup>1</sup>	25
340 3 125	122 - 125	-	-	M8/10	173	157	85	25 x 2,5	935	RAL <sup>1</sup>	25
340 3 141	133 - 141	5	125	M8/10	189	170	92	25 x 2,5	935	RAL <sup>1</sup>	25
342 3 168	159 - 168	6	150	M10	233	198	102	25 x 3,0	1.220	-	10
342 3 210	200 - 210	-	-	M10	273	239	122	25 x 3,0	1.220	-	10
342 3 219	210 - 219	8	200	M10	284	250	128	25 x 3,0	1.220	-	10

RAL<sup>1</sup> = tested, certified and externally monitored according to RAL-GZ 655/B.  
 RAL<sup>2</sup> = tested, certified and externally monitored according to RAL-GZ 655/B and RAL-GZ 656.

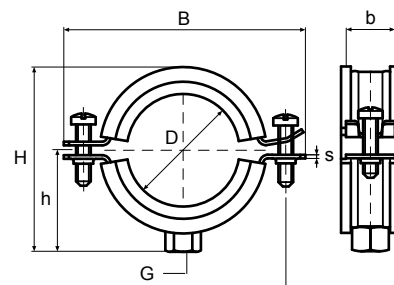
For detailed technical information about our RAL marked products, please see the RAL datasheet in our webcatalogue: [www.walraven.com/int/catalogue/](http://www.walraven.com/int/catalogue/).



RAL-GZ 655/B  
Cert.Nr. 2005-08



RAL-GZ 656  
Cert.Nr. 2011-10



< Ø 141 mm M6  
> Ø 159 mm M8

## Complementary



- BIS Fixing Accessories 455»
- BIS Fastenings 529»
- BIS RapidRail<sup>®</sup> Fixing System 175»

## Further Info

- RAL Information BISMAT<sup>®</sup> 2000 18

## RAL Information BISMAT<sup>®</sup> 2000

Max. allowed load (Fa,z) according to RAL-GZ 655/B and RAL-GZ 656

				 Cert. No. 2010-22										 Cert. No. 2011-10
Part No.	Ø (mm)	Connec- tion nut	Catalogue page	RAL-GZ 655/B	RAL-GZ 656									
				F0	F30		F60		F90		F120			
				Fa,z (N)	Fa,z (N)	Deforma- tion (mm)	Fa,z (N)	Deforma- tion (mm)	Fa,z (N)	Deforma- tion (mm)	Fa,z (N)	Deforma- tion (mm)		
341 3 OXX	15 - 35	M8	A 05 10	600	250	22	100	22	-	-	-	-		
341 3 OXX	40 - 63	M8	A 05 10	800	360	24	260	28	-	-	-	-		
340 3 XXX	15 - 35	M8/10	A 05 10	600	250	22	100	22	-	-	-	-		
340 3 XXX	40 - 63	M8/10	A 05 10	800	360	24	260	28	-	-	-	-		
340 3 XXX	57 - 80	M8/10	A 05 15	520	350	21	230	43	-	-	-	-		
340 3 XXX	83 - 114	M8/10	A 05 15	935	720	41	340	50	-	-	-	-		
340 3 XXX	116 - 141	M8/10	A 05 15	935	-	-	-	-	-	-	-	-		

The max. allowed load (Fa,z) according to RAL-GZ 655/B is calculated using specific statistical methods related to the breaking load and taking into account a deflection of 1,5 mm or 2% of the maximum nominal clamp diameter.

According to the RAL requirements, the test results from above mentioned RAL certified articles are monitored by an independent test institute.